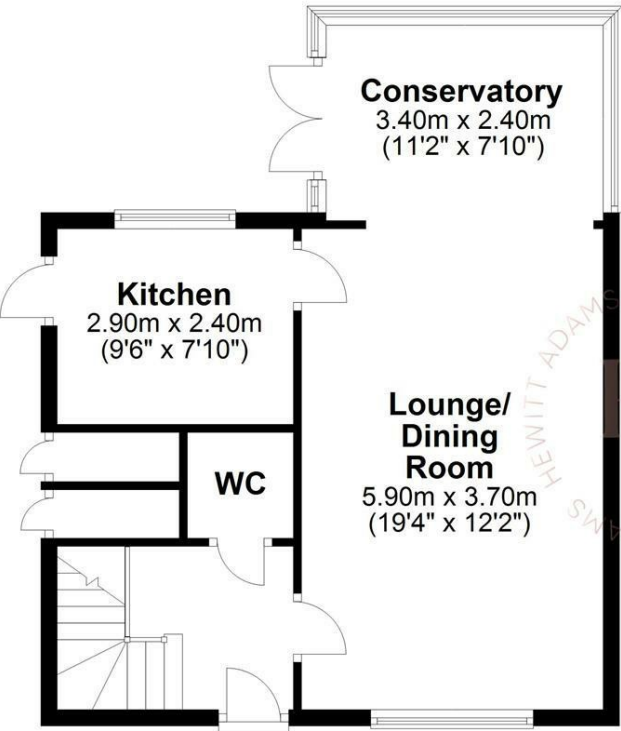




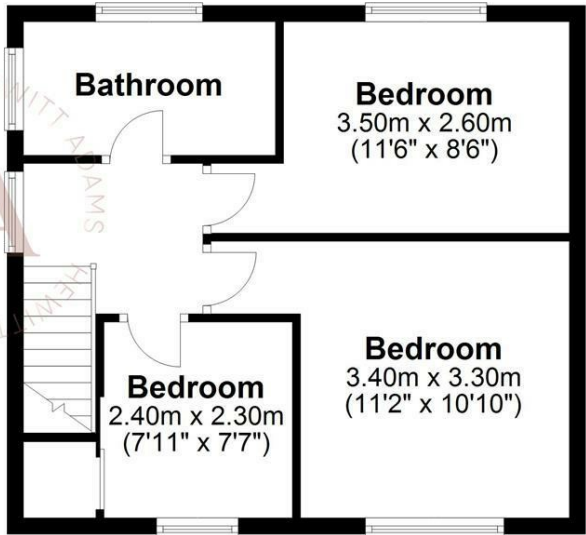
Ground Floor

Approx. 48.1 sq. metres (517.5 sq. feet)



First Floor

Approx. 40.8 sq. metres (439.2 sq. feet)



Total area: approx. 88.9 sq. metres (956.7 sq. feet)  
For illustration purposes only - not to scale



Hazeldene Avenue, Thingwall, Merseyside CH61 7XX  
£250,000

3 Bedroom 2 Reception 1 Bathroom

**\*\*Three Bedroom Semi - Perfect For First Time Buyers - Sold With No Chain!\*\***

Step inside this immaculately presented, ultra-stylish three bedroom semi-detached home in one of Thingwall's most popular spots — the perfect place for first-time buyers ready to step straight onto the property ladder with zero fuss and maximum wow-factor!

Beautifully updated and maintained by the current owners, this home is turn-key ready, boasting fresh, modern décor and bright, inviting spaces throughout. The ground floor welcomes you with a light and airy hallway leading to a generous through lounge-diner, ideal for cosy nights in or entertaining friends. A sunny conservatory offers an extra spot to relax, while the sleek, well-fitted kitchen completes the contemporary vibe.

Upstairs you'll find two spacious double bedrooms, a well-proportioned third bedroom, and a stylish four-piece bathroom suite that's perfect for unwinding.

Outside, this home continues to impress with ample off-road parking, double glazing, gas central heating, and a beautifully landscaped rear garden. With a sunny aspect, a smart patio area, and colourful, well-stocked borders, it's a private haven ready for summer living.



Front Entrance

Into;

Hall

Staircase, radiator, power points, cupboard

Lounge & Dining Room

Double glazed window, radiator, power points, double glazed doors into the conservatory

Kitchen

Modern stylish kitchen with wall and base units, inset sink, integrated fridge and freezer, integrated dishwasher, double glazed window, side door to garden

Conservatory

Overlooking the garden. Double glazed windows and doors.

UPSTAIRS

Bedroom One

Fitted wardrobes, radiator, power points

Bedroom Two

Double glazed window, radiator, power points

Bedroom Three

Double glazed window, radiator, power points

Bathroom

Modern stylish bathroom with bath, shower, low level w.c, wash hand basin, fully tiled, double glazed window, towel rail

EXTERNALLY

Front Aspect - Generous two car driveway

Rear Aspect - Patio, lawned garden

